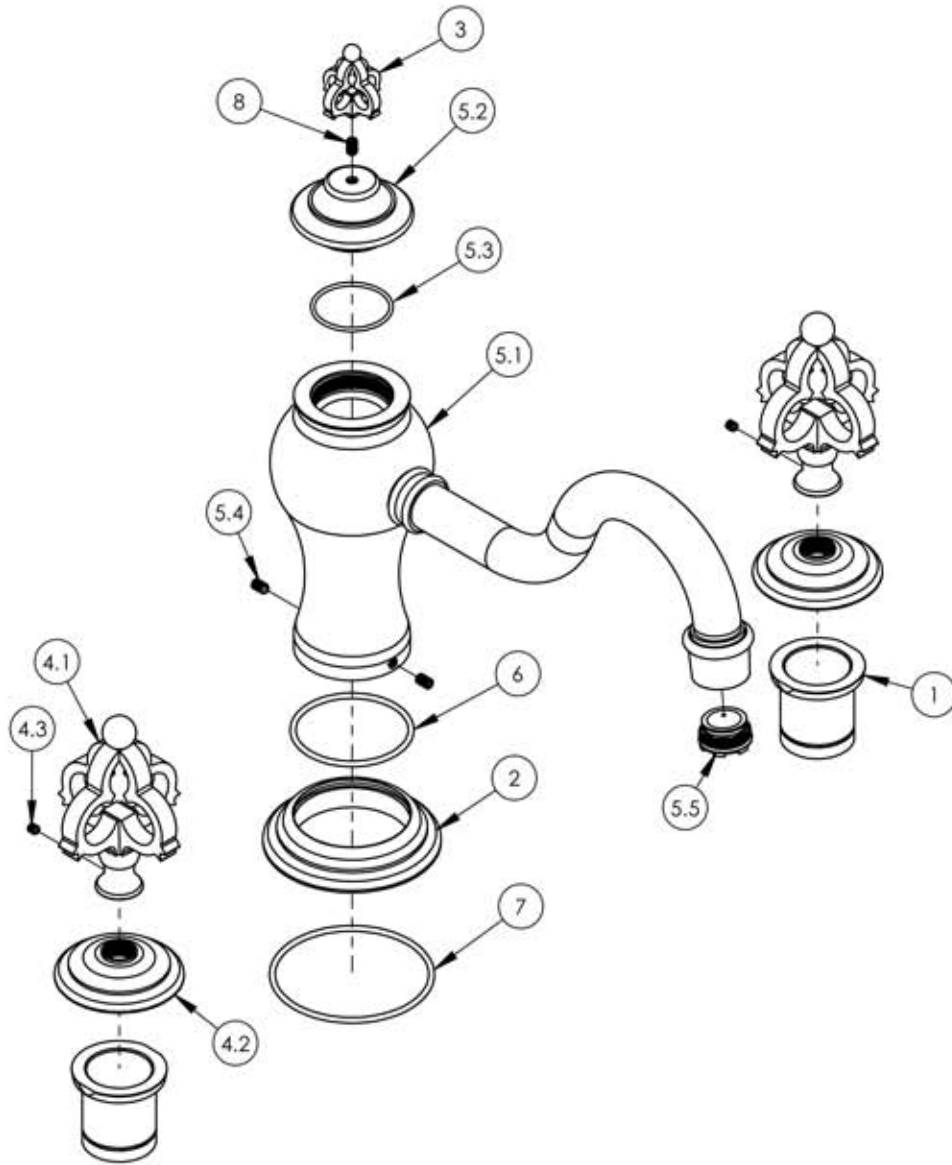


A

B

C

D



ITEM NO.	PART NUMBER	DESCRIPTION	QTY.
1	11077	SLEEVE MOUNT, DECK (ROMAN) TUB	2
2	11306/00	ESCUTCHEON, DECK TUB, COURONNE	1
3	2-039/00	ASSY, POP-UP COURONNE SERIES	1
4	3-340/00	ASSY, HANDLE & ESCUTCHEON COURONNE SERIES	2
4.1	2-038/00	ASSY, HANDLE & ESCUTCHEON COURONNE SERIES	1
4.2	11175/00	ESCUTCHEON, COURONNE SERIES	1
4.3	92008	SET SCREW, CUP POINT 8-32	1
4.4	92184	HEX L-KEY 3/32" HEX x 2 1/8"L	1
5	3-397	SUB ASSY, DECK TUB SPOUT	1
5.1	2-155	SUB ASSY, BRAZED BODY AND SPOUT, COURONNE/MARVELLE SERIES	1
5.2	11305/00	SPOUT CAP, DECK TUB	1
5.3	90028	O-RING, 1-3/8"ID X 1/16"THK, AS-568-028	1
5.4	92060	SET SCREW, 10-24 5/16"L	2
5.5	P05051	AERATOR, CACHE COINED SLOT M24X1.0 FULL FLOW	1
6	90137	O-RING, 2-1/16"ID X 3/32"THK., AS-568-137	1
7	90149	O-RING, 2-13/16" ID X 3/32" THK, AS-568-149	1
8	92060	SET SCREW, 10-24 5/16"L	1

E

ZONE	REV.	DESCRIPTION	DATE	APPROVED
------	------	-------------	------	----------

REVISIONS

1261 LOGAN AVENUE  
COSTA MESA, CALIFORNIA 92626  
PHONE: 714.361.4800  
FAX: 714.617.3120

# PHYLORICH®

Defining Luxury Since 1959

**PROPRIETARY AND CONFIDENTIAL**

THE INFORMATION CONTAINED IN THIS DRAWING IS THE SOLE PROPERTY OF RISS MANUFACTURING. ANY REPRODUCTION IN PART OR AS A WHOLE WITHOUT THE WRITTEN PERMISSION OF RISS MANUFACTURING IS PROHIBITED.

-		-		INTERPRET GEOMETRIC DIMENSIONING & TOLERANCING IN ACCORDANCE WITH ASME Y14.5-2009 & ASME Y14.41-2003 STANDARDS, UNLESS OTHERWISE SPECIFIED. DIMENSIONS ARE IN INCHES. TOLERANCES ARE:			DECK TUB SET, COURONNE SERIES		
NEXT ASSY		USED ON		FRACTIONS ±1/64"	DECIMALS X.X: ±.1 X.XX: ±.01 X.XXX: ±.005	ANGULAR ±.5°	SIZE	ASM/PRT NO.	REV
APPLICATION							<b>A</b>	163-40/00	-
MATERIAL		FINISH		DRAWN	LLO	DATE	10/21/2015		
DO NOT SCALE DRAWING				CHECKED	GRE	SCALE: 1:3.5		WEIGHT: lbs.	SHEET 1 OF 2

5

4

3

2

1